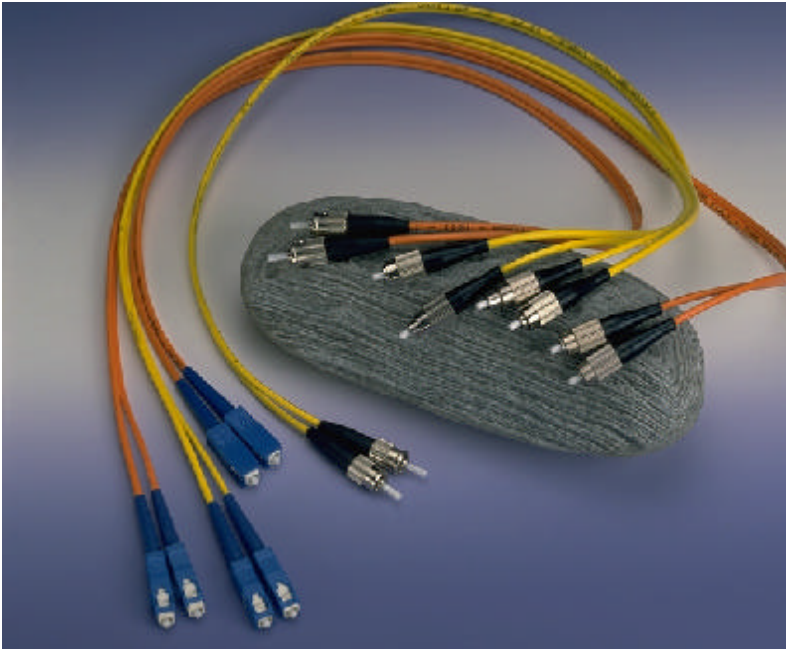


DESCRIPTION



FOCI's Fiber Pigtail/Patchcords are ultra reliable devices featuring low insertion loss and back reflection loss. The Fiber Pigtails/Patchcords come with your choice of simplex or duplex cable configurations, various types of pigtailing, and connector terminations to meet your requirements.



FEATURES

- Low insertion loss
- Low backreflection loss
- Custom defined specifications
- Easy installation
- Environmentally stable

APPLICATIONS

- Telecommunications
- Local area network
- Fiber to the home
- Video transmission
- Fiber optic sensing
- Testing instruments
- CATV



FIBER PIGTAIL/PATCHCORDS

PERFORMANCE SPECIFICATIONS

ITEM	Fiber Pigtail/Patchcords									
Mode Type	Singlemode					Multimode				
Model Name	J-FC J-SC		J-D4 J-LC J-ST		J-FC J-LC J-SC J-ST J-D4		J-SA		J-FD	
Grade	S	H	H	A	H	A	H	A	H	A
Typical Insertion Loss, dB	0.15	0.2	0.3	0.5	0.3	0.5	0.5	1.0	0.3	0.6
Maximum Insertion Loss, dB	0.25	0.32	0.4	0.55	0.4	0.55	0.6	1.2	0.5	1.0
Typical Return Loss ^(*) , dB	50	45	45	40	-	-	-	-	-	-
Minimum Return Loss, dB	48	42	42	35	-	-	-	-	-	-
Operating Temperature, °C	-40 ~ +75									
Storage Temperature, °C	-55 ~ +85									
Fiber Length	To any specified length									

MODEL NAME	J-MR, J-MS			
Mode Type	Singlemode		Multimode	
Grade	M	A	H	A
Typical Insertion Loss, dB	0.3	0.4	0.3	0.6
Maximum Insertion Loss, dB	0.5	0.7	0.6	1
Typical Return Loss ^(*) , dB	40	32	-	-
Minimum Return Loss, dB	35	25	-	-
Operating Temperature, °C	-40 ~ +75			
Storage Temperature, °C	-55 ~ +85			
Fiber Length	To any specified length			

ENVIRONMENTAL RELIABILITY TEST

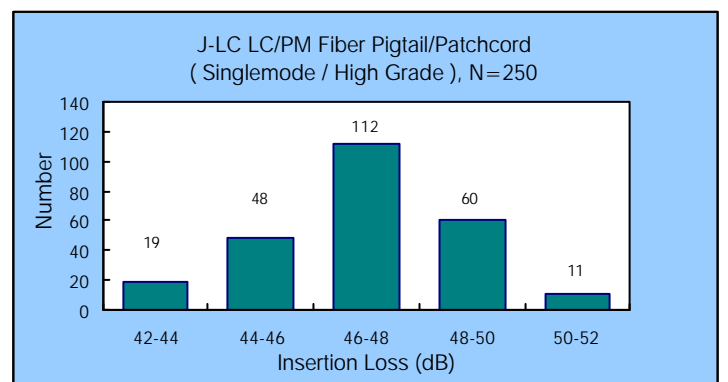
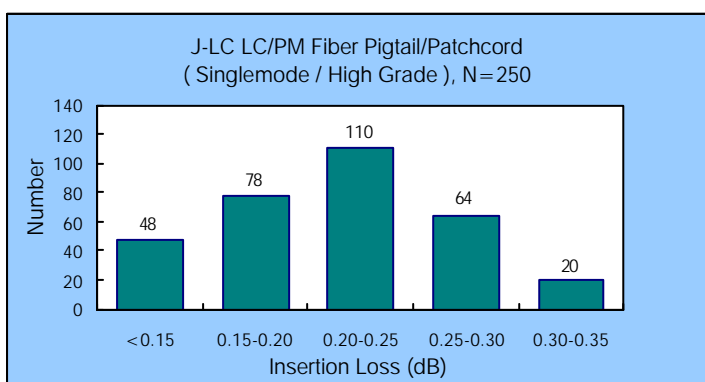
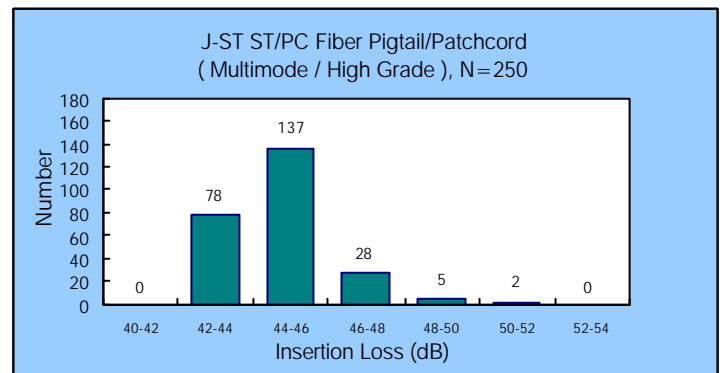
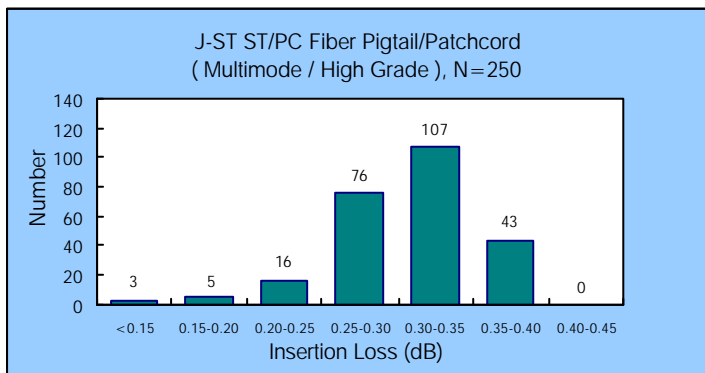
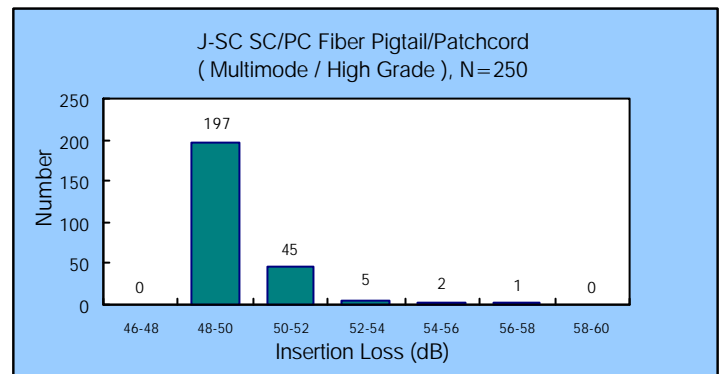
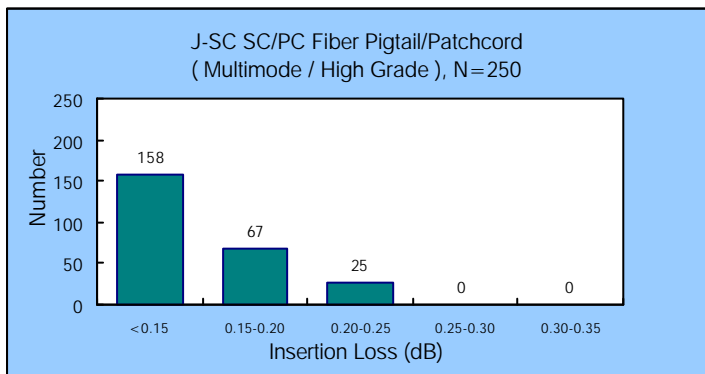
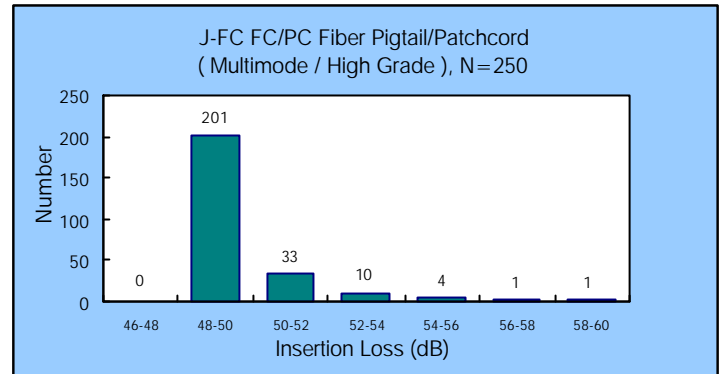
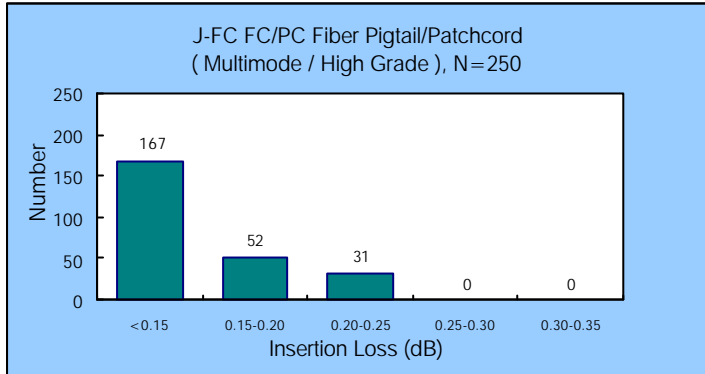
The performance of the patchcords has been carefully designed to meet the toughest Bellcore standards

EIA-455 , GR-326-CORE

in the tests of:

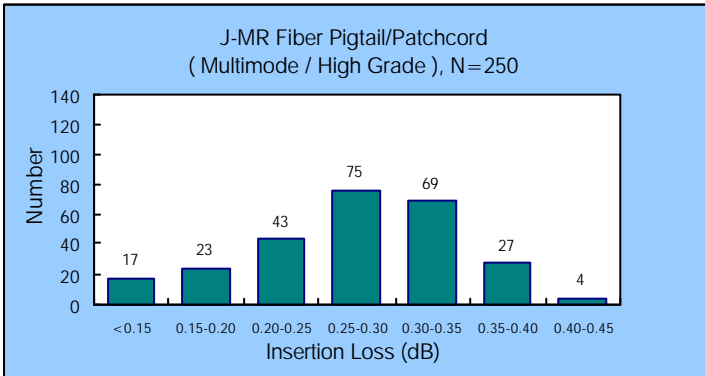
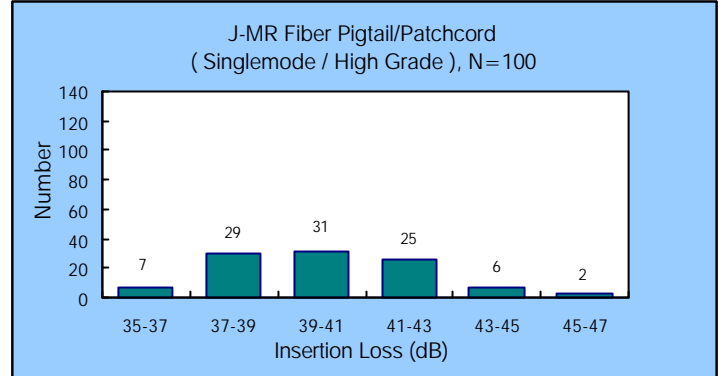
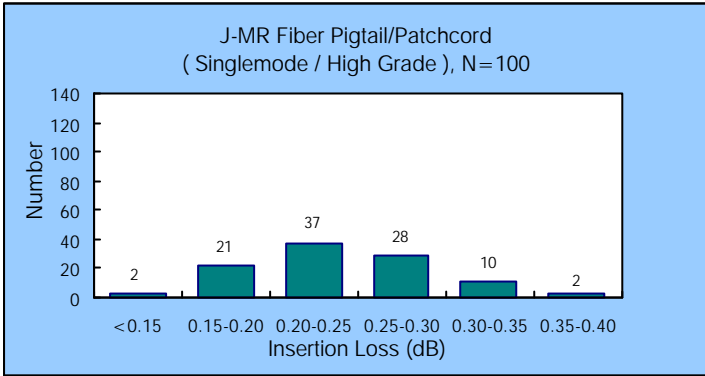
- OPTICAL CHARACTERISTICS
- VIBRATION TEST
- THERMAL CYCLING
- IMPACT RESISTANCE
- SALT SPRAY EROSION
- THERMAL AGING
- HUMIDITY RESISTANCE
- OTHERS

OPTICAL PERFORMANCE



FIBER PIGTAIL/PATCHCORDS

OPTICAL PERFORMANCE



OPTICAL PERFORMANCE

J - □□ - □□ - □□ - □ - □□□□ - □□ - □□ / □□

Connector Type

- Bl.....Biconic type
- D4.....D4 type
- DI.....DIN type
- FC.....FC type
- FD.....FDDI type
- HY.....Hybrid
- LC.....LC type
- MR.....MT-RJ female type
- MS.....MT-RJ male type
- SA.....SMA type
- SC.....SC type
- ST.....ST type
- XX.....Others, please specify

Fiber Type

- A.....Standard singlemode fiber
- B.....Dispersion shift fiber (check availability)
- C.....50/125µm fiber
- D.....62.5/125µm fiber
- X.....Others, please specify

Cable Type

- C.....Simplex, coated fiber (250µm)
- D.....Duplex PVC cable (3.0mm)
- E.....Duplex mini zipcord cable (1.8mmx2)
- L.....Simplex, loose tube cable (900µm)
- P.....Simplex, PVC 2.4mm cable
- Q.....Simplex, PVC 3.0mm cable
- T.....Simplex, tight buffer cable (900µm)
- X.....Others, please specify

Polishing Type

- CX.....Convex
- FT.....Flat

Grade

- S.....Super (singlemode FC,SC only)
- H.....High
- A.....Average

Pigtail/Patchcord Length

Please specify in meters. If centimeters is desired , then start with "X" followed by 3 digits

Configuration

- SG.....Pigtail
- DB.....Patchcord

Connector Type
(for both ends)

- AP.....FC/APC type
- AS.....SC/APC type
- Bl.....Biconic type
- D4.....D4 type
- FC.....FC type
- FD.....FDDI type
- LC.....LC type
- MR.....MR type
- MS.....MS type
- SA.....SMA type
- SC.....SC type
- ST.....ST type
- NC.....None
- XX.....Others, please specify